

# KILHAM NEWS

## DECEMBER 25 & JANUARY 26

### ***Church Floodlights***

At a recent meeting the PCC discussed the Church floodlights, their importance to the village, the cost to our church as well as their impact environmentally.

The cost of the floodlights is in the region of £90 per month. All Saints' PCC has

made the decision to continue with flood lighting the Church from 4pm-10pm during the darker months.

However, to help towards the cost of the floodlights we invite members in our community to consider donating towards the church floodlighting in memory of a loved one.

This thoughtful gesture not only honours their legacy but also helps illuminate our church as a beacon of hope and remembrance within the community. Each contribution supports the upkeep of this beautiful tribute, allowing the light to shine in their name and bring comfort to others. A memory book would be open in Church with the names of the loved ones to be remembered.

If you would like to dedicate a light in someone's memory, please contact the Church Wardens or Clergy Team on the details below for how to contribute. There is a desire to upgrade the lighting to reduce energy consumption and provide more environmentally friendly lighting, if there are any individuals or businesses who would be interested in sponsoring this project please get in touch—

With thanks, All Saints' Church PCC.

*Rev Glyn Owen 01262 420313, Pam Barker 01262 420652 ,  
Sue Dawson 01377 259068*



**ALL ITEMS FOR INCLUSION IN THE FEB/MARCH NEWSLETTER SHOULD BE SENT TO:**

**[gerryhornerkpc1@gmail.com](mailto:gerryhornerkpc1@gmail.com) BY JAN 15TH PLEASE**



## KILHAM PLAYING FIELDS ASSOCIATION—UPDATE



Thank you to everyone who attended and supported our biggest and best bonfire and firework display ever. What a fabulous night—the weather was perfect and a record number of people turned up to enjoy the evening. We have to say a big thank you to everyone from The Old Star, Lillys Plumbing and Boyes Garage for your amazing help and support. We couldn't do it without you. We had a huge team of volunteers who helped in preparing, working during the event and clearing up afterwards. Again—thank you so much.

It does take a lot of work to organize and host these events—and we are always grateful for anyone who can lend a hand—either as a volunteer at events, helping maintain the field or attending the monthly meeting of the KPFA to help plan and organize the events and ongoing improvements to the playing fields. We are particularly looking for anyone with knowledge of Health and Safety policy to join the team. Please contact us on our facebook page or just come along to our next meeting which is January 20th in the meeting room 7pm The Old Star.

Please see further in the newsletter about the next two free events we are hosting for the village with funding from Difey. Book your free place on line using the QR code. See the back page for all the route and timing details of the ever popular **Farmer Christmas Tractor Run on December 14th !**



***Finally, from all of us at KPFA—  
Merry Christmas and best  
wishes for 2026***





KILHAM PLAYING FIELD ASSOCIATION PRESENTS

# BEATS AND BOOGIE NIGHT

Where the beats meet the dancefloor!

**JAN 31<sup>ST</sup> 7:00 PM TILL LATE**

Kilham Village Hall

Free entry

Complimentary Pie and Pea Supper

Bar available - supported by The Old Star



# MIXTAPE

**ROCK & INDIE ANTHEMS**

Scan here  
for tickets > >



Do it for  
East Yorkshire  
Community  
Grant.  
[DoltForEastYorkshire.co.uk](http://DoltForEastYorkshire.co.uk)



Kilham Playing Field Association presents

# KILHAM FAMILY DERBY NIGHT



Feel the Rush –  
The Race is On!

7:30 PM **27 DEC**

Kilham Village Hall

Bar available supported by The Old Star  
– no bring your own

Free entry,  
Free betting  
Free supper

Do it for  
East Yorkshire  
Community  
Grant.  
[DoltForEastYorkshire.co.uk](http://DoltForEastYorkshire.co.uk)

**Grab your tickets  
and join the action!  
Scan here >>**



# 💙 Why do Girlguiding volunteers do it?

It's not for the pay (we checked — still £0:).

It's not for the glamour (we've worn more glitter glue ✨ and mud 🟤 than most five-year-olds).

And it's definitely not for the peace and quiet (have you ever tried to keep 20 Guides quiet during a badge ceremony? 😊).

We do it for *that moment* — when a girl tries something new, surprises herself, and grins like she's just conquered Everest 🏔️

We do it for the friendships 💕, the laughter 😂, the late-night campfire songs 🔥, and the pride that comes from helping girls find their confidence and voice 🌈

You can't put a price on that.

(But you *can*\* put a badge on it 😊🏅)

Join the fun. Be the reason girls believe they can do anything!

✴ Girlguiding

## KILHAM RAINBOWS

Sue Dennis the leader of Kilham Rainbows has decided to step down from this position and unless someone comes forward to take over the running of the group or we do not get more volunteers, then the group may have to be closed as of Easter next year

If you would like to run the group or just volunteer then please register your interest on the [guiding.org](https://www.guiding.org) website

All training and support will be provided



## KILHAM OUTREACH POST OFFICE.

The Outreach Post Office running at the Village Hall is open:

- Wednesday afternoons 1.00 pm until 4.00 pm
- Friday mornings 9.00 am until 12 noon.

Please make sure we all use this invaluable service in our village.



At our October meeting Peter Rogers of Burnby Hall Gardens gave us a beautiful visual show of the gardens through the seasons.

Later in the month we had the W.I. Federation Meeting at the Rix Pavilion in

Driffield - great fun with a Murder Mystery, local stalls and a raffle.

We enjoyed a Taster Testing evening at our November meeting - attempting to tell the difference between well-known and 'own' brands of various sweet and savoury foods.

Our December meeting will be our Annual Meeting together with festive entertainment and in January we will be having fun with a Beetle Drive.

Just a note for everyone's diaries - in March, Rachel Edwards from Humberside Police will be giving a talk about Fraud and Scams and in April, Phil White is talking about Life After Radio Humberside.

**BOTH THESE TALKS WILL BE FREE AND OPEN TO ALL.**

Angela will be at The Star for lunch on the first Thursday of the month at noon if any ladies want to come along. Even if you are not a W.I. member why not come and join us - you will discover that we are not all Jam and Jerusalem!!

If you have any questions please email the secretary at [kilhamwi@eastyorkshirewi.org.uk](mailto:kilhamwi@eastyorkshirewi.org.uk)

## KPFA CHRISTMAS CRACKER PRIZE DRAW

*Buy your lucky ticket at Boyes Garage or  
at The Old Star*



**TICKETS ONLY £1**

**1ST PRIZE—£250**

**2ND PRIZE—£100**

**3RD PRIZE—£50**

**WINNING TICKETS TO BE DRAWN AT OUR FAMILY RACE NIGHT  
27TH DECEMBER AT KILHAM VILLAGE HALL.**

**REG CHARITY NUMBER: 1193546**



## Kilham Mobile Library Service

**For books, food bags and hearing aid batteries  
We are outside Kilham Primary School, Millside on  
alternate Thursdays.**

**Pop in and see our wide selection of fiction, non  
fiction, audio and large print books.  
no fines and books reserved for free.**

**4th & 18 December**

**15th & 29th January and 12th & 26th Feb**

Bringing  
your library  
into your  
community



# Ray's Voices Christmas Concert

Thurs 11<sup>th</sup> Dec

7pm

at All Saints' Kilham

Admission by donation\*

Christmas raffle & refreshments

For more information:  
contact Pam on  
01262 420652

\*For Gaza  
with Love



# Community Christmas Party Tea

Wed 10<sup>th</sup> December

Please note  
later time

1:00pm Kilham Village Hall



## Community Soup, Sandwich & Puddings

Wed 14<sup>th</sup> January

12:30pm Kilham Village Hall



for more information or dietary requests,  
phone Pam on 01262 420652

hosted by: All Saints' Kilham Community Team



# SOX-EMBER

All Saints', Kilham Appeal 2025

Again this Christmas, working in partnership with The Kingfisher Cafe  
your gift of a NEW pair of warm sox, gloves, hat, scarf, toiletries or a sweet  
Christmas treat would be truly a joyful blessing for neighbours in need;

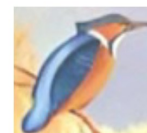


Your gift(s) will be delivered for Christmas to  
**THE KINGFISHER CAFE**, in Bridlington

Please leave all gift items by Monday, 22 December  
at All Saints', Kilham.

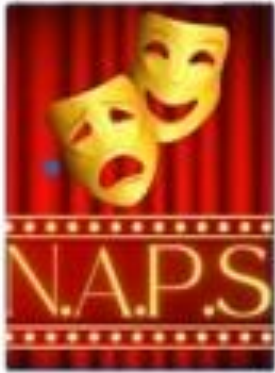
There is a collection box 24/7 at All Saints' Kilham

For further info contact Carol: 07912 441125

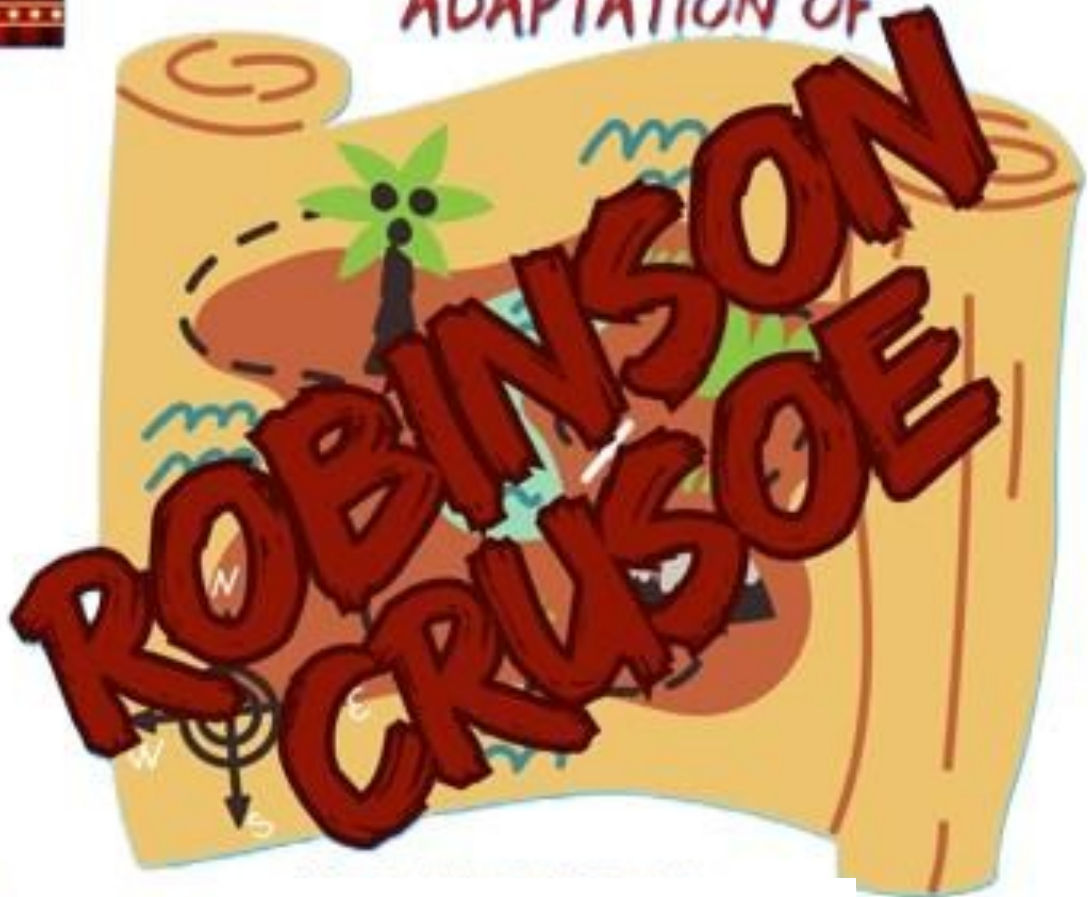


Thank you  
very much

[www.kingfishercafe.org.uk](http://www.kingfishercafe.org.uk)



**NAFFERTON AMATEUR PRODUCTION  
SOCIETY  
PRESENTS.... A FUN PACKED FAMILY  
ADAPTATION OF**



**KILHAM VILLAGE HALL**

**Saturday 17th January**

**At 4pm**

**Tickets £10 adults**

**£5 children (under 4's free)**

**Family of 4—£25 extra child £5 each**

**Tickets can be booked by contacting Carol on 07354 301119**

*Looking for the treasure*





## Kilham Parish Council

As the weather turns colder, it is that time of year when the Parish Council begins considering projects for the year ahead. Before we do, we are very pleased to report that, thanks to the most generous gesture of BDS Yorkshire Ltd, Newlay Asphalt Ltd, and Mr Peter Middlewood, the old section of the cemetery road has now been fully tarmacked. Both tarmacking companies kindly donated their time, equipment, and materials free of charge, while Mr Middlewood generously sprayed the area to enable the work to be carried out, also free of charge. A shelter with guttering and water butts is being built to collect rainwater so people do not have to bring water for their flowers. Next year, the Parish Council plans to place a bench either in the shelter or at the end of the new path.

We would also like to extend our thanks to Boyes Garage for allowing a defibrillator to be installed on their shop front. The defibrillator was donated by The Heart Foundation, and the Parish Council will take responsibility for its maintenance. This ensures that life-saving equipment is within easy reach for anyone who might need it.

Our gratitude also goes to Lucy at The Old Star for kindly offering to purchase the Christmas tree this year, and to the volunteers who put in the time to erect and decorate it.

Finally, we would like to wish everyone a Merry Christmas and a Happy New Year

## KILHAM VILLAGE LOTTERY

**Draw Date: SUNDAY 28<sup>TH</sup> SEPTEMBER 2025**

1 <sup>ST</sup> PRIZE	MR ANTHONY ROBSON (613)	£70.00
2 <sup>ND</sup> PRIZE	MR DAVID SHEADER (357)	£50.00
3 <sup>RD</sup> PRIZE	MRS LOUISE MUNDY (585)	£29.00

**Draw Date: SATURDAY 25<sup>TH</sup> OCTOBER 2025**

1 <sup>ST</sup> PRIZE	MR RICHARD CLEMINSHAW (243)	£70.00
2 <sup>ND</sup> PRIZE	MR GRAHAM WOODWARD (454)	£50.00
3 <sup>RD</sup> PRIZE	MR RICHARD ZERNY (516)	£29.00

For anyone new wishing to have a number/s or if you require any further information or have any queries please contact Louise McKie on 01262 421804 or Marie Sheader on 01262 420777 or email [kilhamvl2017@gmail.com](mailto:kilhamvl2017@gmail.com)

Numbers are 50p each per month and you can hold as many numbers as you wish.

The next draw is on Saturday 29<sup>th</sup> November 2025. Please ensure you have paid either Marie or by Standing Order by this date otherwise unfortunately your number/s will not be put in the draw.

# Christie Private Client Limited

## A SERVICE BASED IN KILHAM

### **wills - powers of attorney - and more**

#### *who we are*

With a wealth of experience our principal Geoff Christie is a retired solicitor who has spent many years working in the areas in which we specialise. He will discuss your requirements and then help you to put your affairs in order.

We are happy to visit clients locally and can also work safely & remotely by phone, post, email, or video conferencing. Our fees are competitive and our service comprehensive. We have clients across the UK and beyond.

#### *how we can help you*

- WILLS
- LASTING POWERS OF ATTORNEY (please ask for our free client guide)
- DEPUTYSHIP APPLICATIONS (please ask for our free client guide)
- PROBATE
- ESTATE ADMINISTRATION
- ELDERLY CLIENT ISSUES
- INHERITANCE TAX PLANNING
- TRUSTS

*We are qualified and regulated members of the Institute of Professional Willwriters and are fully insured to protect our clients interests.*

# 01262 421815

**office@christieprivateclient.co.uk**

**[www.christieprivateclient.co.uk](http://www.christieprivateclient.co.uk)**





# ALL SAINTS CHURCH SERVICES AND EVENTS 01262 420313

Churchwardens

Sue Dawson 01377 259068

Pam Barker 01262 420652

## December

7 <sup>th</sup>	11.00am	Holy Communion
11th (Thurs)	7.00pm	Concert for Christmas with Ray's Voices
18 <sup>th</sup> (Thurs)	2.00pm	School Nativity
21 <sup>st</sup>	11.00am	Carnaby: Churches together Holy Communion
24 <sup>th</sup>	5.00pm	Christingle service
	11.30pm	Christmas eve: Holy Communion
28 <sup>th</sup>	11.00am	Rudston: Churches together Holy Communion

## January

4 <sup>th</sup>	11.00am	Holy Communion
18 <sup>th</sup>	11.00am	Holy Communion
25 <sup>th</sup>	11.00am	Wold Newton: Holy Communion
	4.00pm	All ages together service

Talking About Faith': Every first Wednesday evening of the month at 7pm at The Old Star Inn, Kilham. A friendly and warm welcome awaits those who might be interested in attending these informal evenings. A chance to chat about life and faith. For further information contact [revglynow-en@btinternet.com](mailto:revglynow-en@btinternet.com)

Every Tuesday at 10.30am, in church, at All Saints, Kilham, come and join in for a time of prayer and discussion over a cuppa and biscuits all welcome.

We will continue to have a 'Zoom' service on the first and third Sundays of the month at 11am and weekly each Wednesday at 10am (contact [revgly-nowen@btinternet.com](mailto:revgly-nowen@btinternet.com) for log-in details)

Dear Friends

Firstly, may I wish you all a very Merry Christmas and a happy New Year. This time of year, is certainly a lovely one especially in our village community. There are the many events such as the school nativity and the Christingle service, as well as the excitement as the big day arrives and the presents are opened and the food and of course drink, are consumed. But of course, there is the real meaning of Christmas, the reason we celebrate the season, it is that well known story of the birth of Jesus.

Church cont.

As Christians it is one of those central events in our calendar, it reminds us that Jesus didn't have it easy, born in a cold stable with smelly animals, then having to run away from Herod to become a refugee in Egypt. He had a tough start in life. But from that he became one of, if not the most important and influential figures in history. It is from this past that he calls to us now in the future, we have so much to be grateful for and, compared to many so much to give, not just in material things but in giving our time as well.

As a village your generosity has been so appreciated, the food bank is always well supported and our various fund-raising events during the year are also keenly given too, such as our shoebox Christmas gifts. This is the true meaning of Christmas which Jesus wishes us to remember and join in with, when we reach out to others with a loving and generous hand. So, a big thank-you to all who have been so generous over this last year and as Jesus himself said, 'well done you good and faithful servant'. God bless each of you.

Many blessings, Rev Steve

## **Kilham Baby and Toddler Group**

Calling all Mums, Dads & Carers,

We have a fantastic, fun-filled morning for babies and toddlers at the village hall in Kilham every Wednesday morning from 09.30am to 11.15am during term-time. Why not come along and meet up with other parents and carers. Have a coffee, while you and your child make lots of new friends. For more information, please call Amy Clarkson. 07500069642



### **Kilham Knit and Natter group**

We meet every Wednesday

7.00pm - 9.00pm.

All skills levels welcome for a productive, cosy session including a cup of tea. Just £2.50. Please come along and see if this is for you, as and when you can make it.





**SERVICE  
REPAIRS  
MOT**

## THE GARAGE

Chapel Lane, Kilham **01262 420627**

email: [simonrhodes@gboyes.co.uk](mailto:simonrhodes@gboyes.co.uk) • website: [www.gboyes.co.uk](http://www.gboyes.co.uk)

**TYRES • BATTERIES • EXHAUSTS**

**Garage Opening Times: Mon-Fri: 8am-5pm Saturday: 8am-12 noon**



**FULL RANGE OF DIAGNOSTIC CAPABILITIES  
4 X 4 SPECIALISTS • WHEEL ALIGNMENT**

*★ Friendly Service From Local People ★*

### The Shop

**Have you visited our shop recently?**

New items are being added to our stock all the time.

**The Shop Opening Times:**

Mon-Fri: **7am-7pm**

Saturday: **7:30am-5pm**

Sunday: **9am-1pm**



**We are  
OPEN**

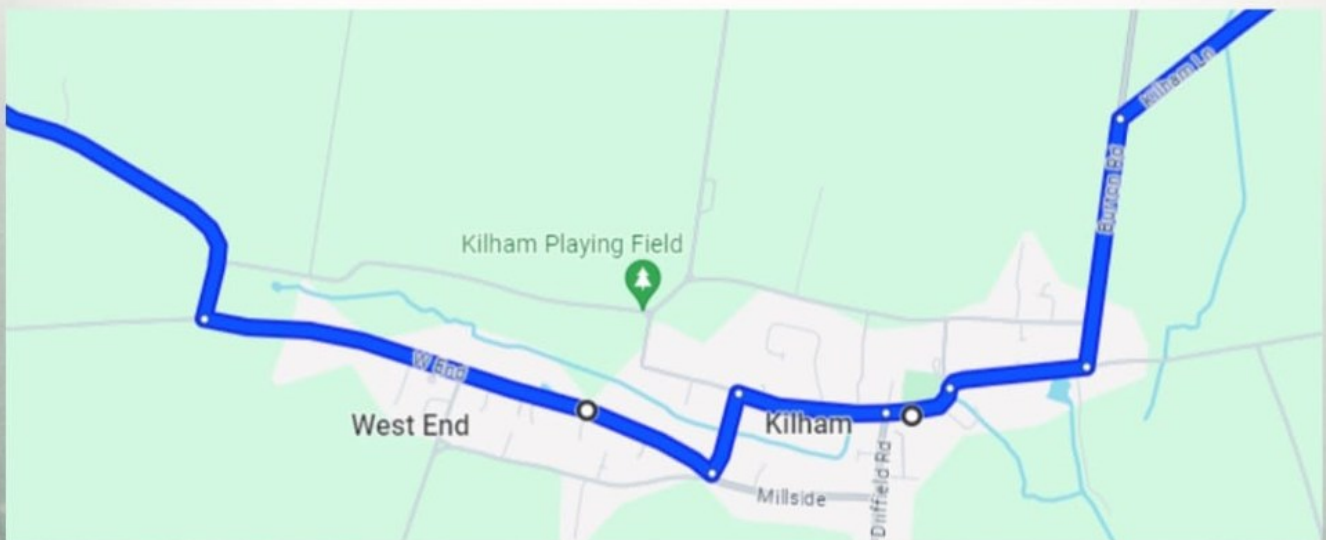
*We look forward to seeing you soon...*



# Farmer Christmas Tractor Run

**Sunday 14th December**

**Kilham Route approx 5.45pm**



***Tea, Coffee, Hot Chocolate and deliciously warming mulled wine will be available to purchase from Kilham Church from 4.pm onwards. Make sure you get your hot drink before you watch the wonderful tractor display go through the village.***